

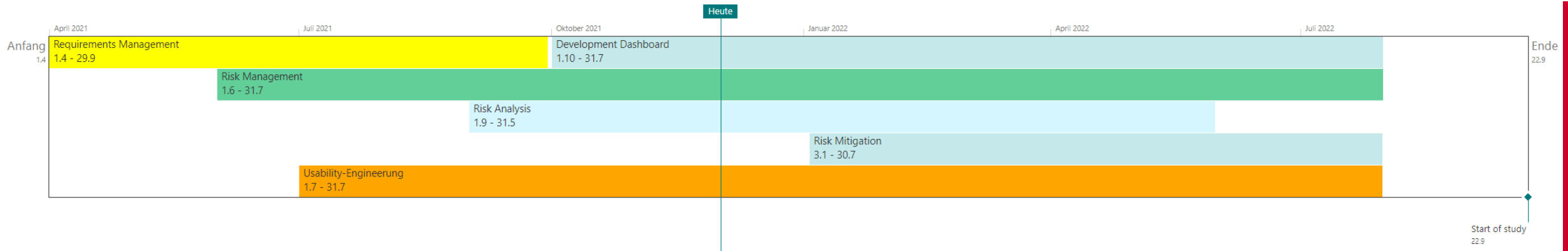
WP 2

Roadmap

Agenda

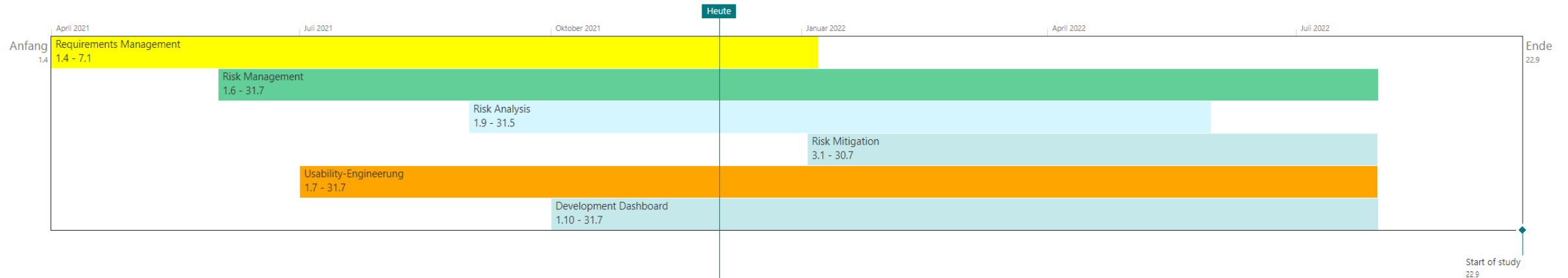
- Roadmap Current state of development
- Important notes/issues

Roadmap: Initial from project proposal



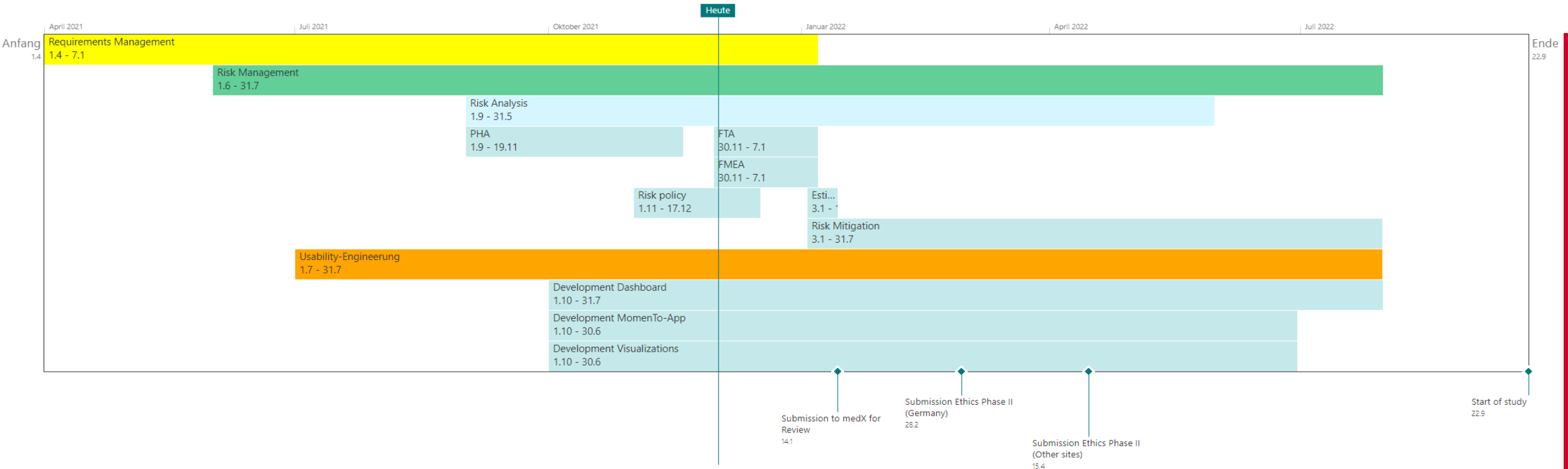
- D 2.1 Finish Requirements-Engineering (30.09.2021)
 - Creation of **initial** requirements delayed (31.10.2021) → min. 2 month delay
 - Trying to compensate with Parallelization of development and requirements-engineering
- Visualization implementation as additional workload

Roadmap: First adaption



- Ethic submission date for Phase II in April
 - Ethic submission in Germany starts earlier (end of february)
- Review of documents by medX (mid January)
- Risk-Management Results needed for submission and review
 - **Original plan:** mid June
 - **Current plan:** mid January

Current Roadmap

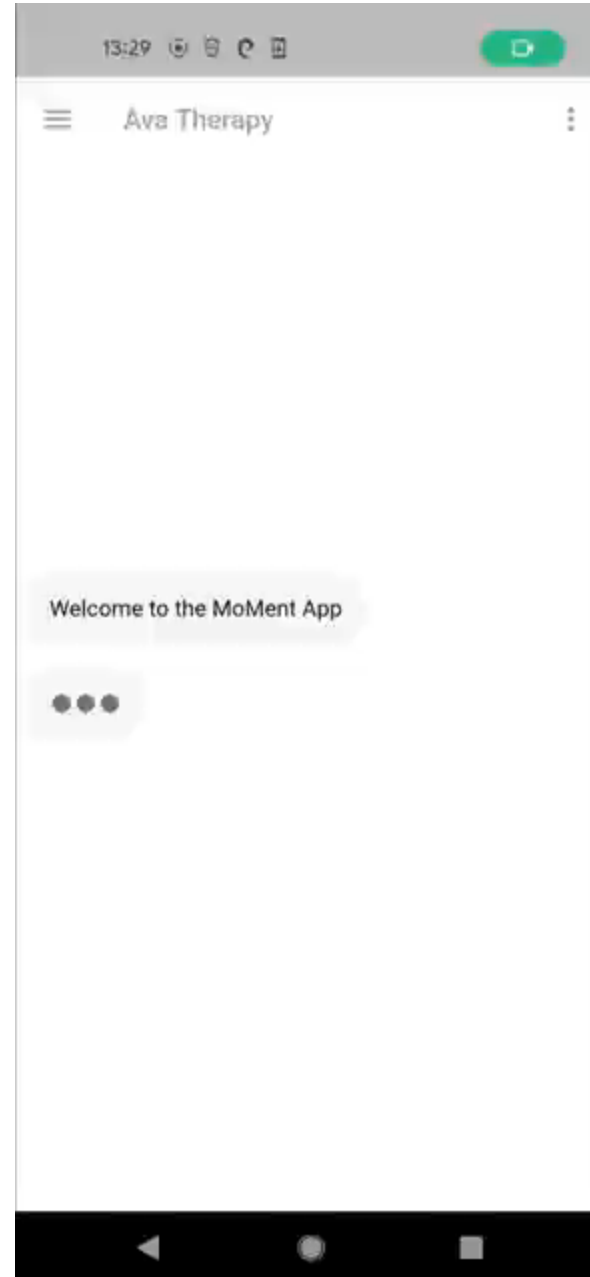


- Risk-Analysis activities must be finished by **14.01.2022**
 - Challenging timeline for initial set of risks
 - Risk-Analysis should happen parallel to development, not before ⚡
 - Amendments regarding new/updated risks possible

Most important, open tasks

- Requirements-Engineering
 - Final definition of visualizations
 - Dashboard
 - App
 - Final definition of question items
 - Translations of items and interfaces
- **Riskmanagement** (*important for submission*)
 - Define risk policy
 - Conduct FTA
 - Finish FMEA
 - Estimate risks
 - Define risk-mitigation -> analyze risk mitigation measurements

State of the MoMent App



State of the Dashboard



A screenshot of a web browser window. The browser's address bar shows the URL: localhost:3000/auth/realms/TherapyDesigner/protocol/openid-connect/auth?client_id=td-management-console... The browser's tab is titled "Anmeldung bei TherapyDesigner". The browser's bookmark bar contains several items, including "Anmeldung bei REL...", "Bookmarks", "Notifications | Andr...", "QM-Handbuch", "Noun Project - Icon...", "Checkliste: Einzurei...", "emg", "freeCodeCamp.org...", and "Leseliste". The main content of the browser is a login page for "THERAPYDESIGNER". The page has a blue background. At the top center, the word "THERAPYDESIGNER" is written in white, uppercase letters. Below this, there is a white rectangular box containing the login form. The form has a title "Sign in to your account" and a language selector "Deutsch v" in the top right corner. The form contains two input fields: "Benutzername oder E-Mail" with the value "karl@therapist.com" and "Passwort". Below the password field, there is a checkbox labeled "Angemeldet bleiben" and a link "Passwort vergessen?". At the bottom of the form is a blue button labeled "Anmelden".

Important Notes/Issues

- IP (Intellectual Property) Scan from the EU stressed importance of copyright with regard to ESM-Questions used in DMMH-Intervention
- Technical requirements for billing systems (EU-wide) could lead to technical changes. Consultation might be useful.